



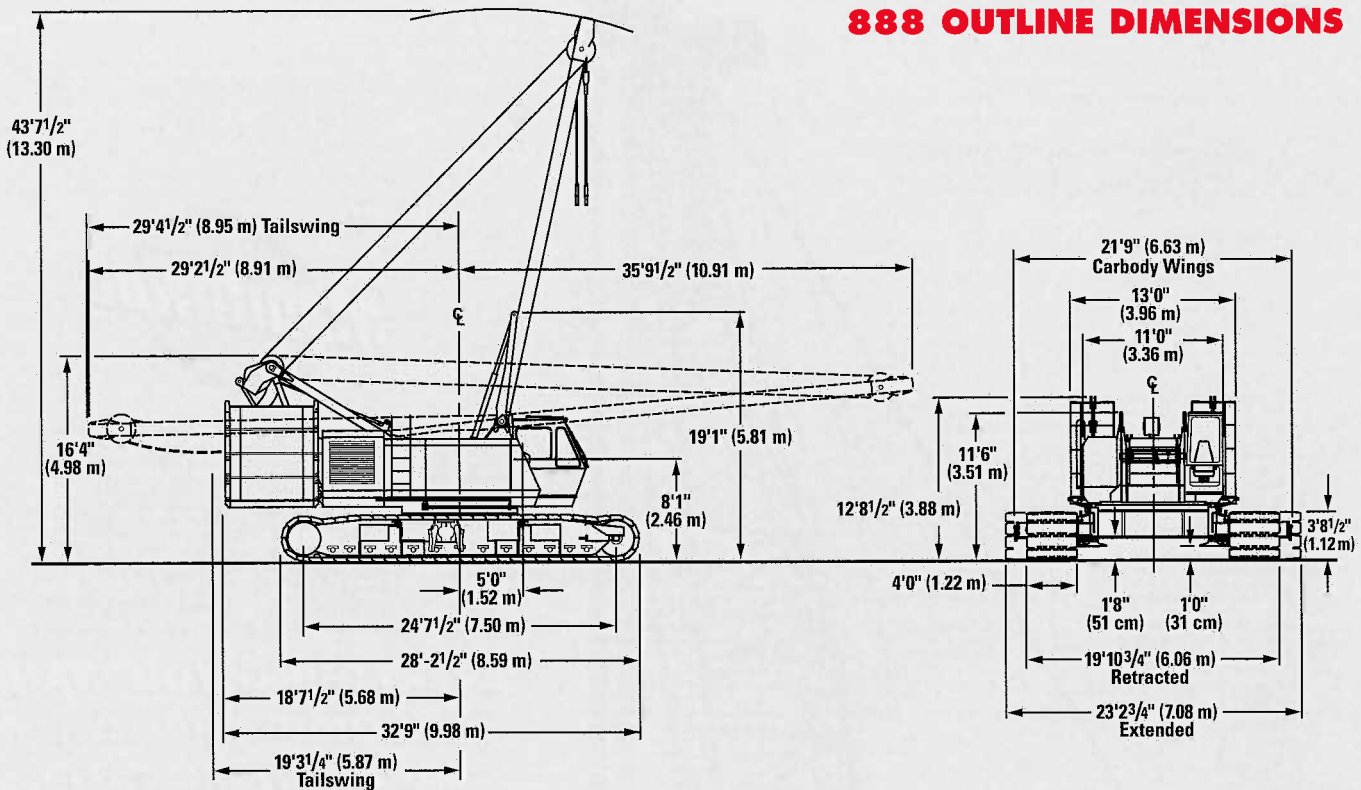
Manitowoc

888

**EVERYTHING YOU WANT
FROM A CRANE...
CAPACITY, MOBILITY,
& RELIABILITY**

**230-Ton (209-mton) Liftcrane
32,000 Lb. (14,515 Kg) Clamshell
20,000 Lb. (9,072 Kg) Dragline**

888 OUTLINE DIMENSIONS



UPPERWORKS

ROTATING BED: High-strength fabricated steel rotating bed is mounted on 108" (2.76 m) diameter turntable bearing.

HOIST DRUMS: Two full-width hoist drums are standard. Both drums are 37" (94 cm) wide and 19 1/2" (49.5 cm) in diameter. Each is antifriction bearing mounted and driven independently by a variable-displacement hydraulic motor coupled to a planetary reduction. External contracting brakes mounted to the drum shafts are air applied and equipped with spring-set air-released parking brakes. A bi-directional redundant brake mounted between the hydraulic motor and planetary drive is standard for each hoist, and each drum is equipped with ratchet and pawl. A freefall clutch, laggings, and other options are available.

BOOM HOIST: Independent boom hoist is powered by a variable-displacement hydraulic motor coupled to a planetary reduction. It is equipped with a bi-directional brake and a ratchet-and-pawl. The boom hoist drum is grooved and measures 13 3/4" (34.6 cm) wide by 18 3/4" (47.6 cm) in diameter.

SWING SYSTEM: Independent swing is powered by a fixed-displacement hydraulic motor coupled to an internal brake and planetary reduction. System includes swing lock.

OPERATOR'S STATION: Fully enclosed and insulated steel module mounted to the left front corner of the rotating bed. Module is equipped with sliding door, large safety glass windows on all sides and in roof. Standard equipment includes electric horn, cab space heater, dome light, fire extinguisher, air-circulating fan, and windshield wipers for upper front window, lower front window, and roof window.

ENGINE: Cummins M11 diesel engine rated 330 HP (246 kW) at 2,100 RPM provides independent power for all machine operations through the multi-hydraulic-pump transmission. Power system includes engine block heater (120V), ether starting aid, transmission disconnect clutch, high-silencing muffler, alcohol injector in air line, hydraulic oil cooler, radiator, and fan.

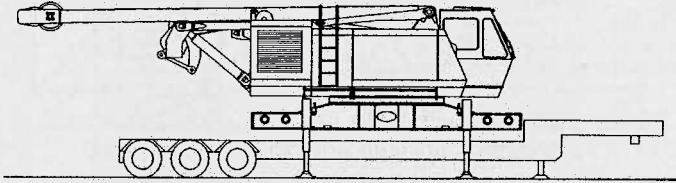
CONTROLS: Modulating electronic-over-hydraulic controls provide infinite speed response directly proportional to control lever movement. Controls include Manitowoc's exclusive EPIC® control system providing microprocessor driven control logic, pump control, on-board diagnostics and service information. Block up limit control and drum-rotation indicator are standard for hoist and whip falls.

LOWERWORKS

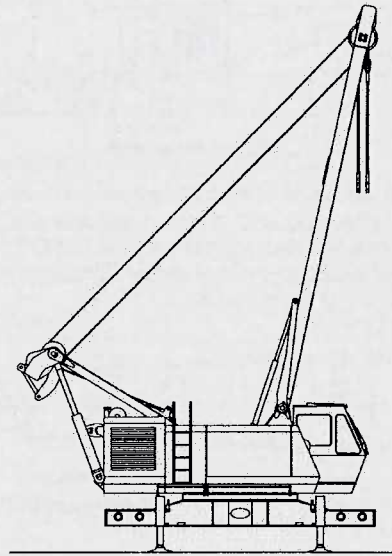
CARBODY: Connects rotating bed to crawlers. High-strength fabricated steel assembly with patented FACT™ connection system for fast removal of crawler assemblies. Optional self-assembly system includes four hydraulic jacks that raise entire upperworks-and-carbody unit off the transport trailer. Hydraulic jacks support this unit during crawler installation and removal.

CRAWLERS: Crawlers are 28'2 1/2" (8.59 m) long steel fabrication with 48" (1.22 m) wide cast steel crawler tread and sealed low-maintenance intermediate rollers. Each crawler is powered independently by a variable-displacement hydraulic motor. Crawlers provide ample tractive effort to counter rotate with full rated lifter capacities. Each crawler includes two hydraulically powered pins for fast installation and removal from carbody.

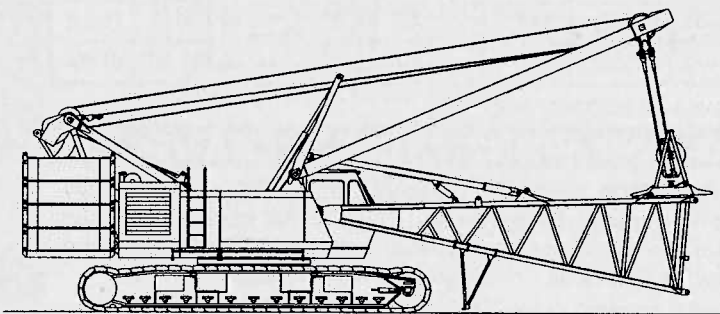
888 SELF-ASSEMBLY



1 The main shipping module, including carbody, upperworks, gantry, mast, and boom-hoist reeving, arrives as a unit. Optional hydraulic jacks mounted on the carbody raise the unit off its transport trailer.



2 Hydraulic cylinders raise the gantry to working position and lift the mast to vertical. The boom hoist rigging then lowers the mast so it can be rigged with the set-up load block. Wire rope from one of the hoist drums is reeved through sheaves in the mast to rig the block.



5 The mast is used to lay out boom sections and install the boom butt. Power-activated pins simplify installation of the butt.

