

★ 4000 Series ★

The Pioneer Plus:

- ★ Patented "X" type outrigger design for superior stability
- ★ 500 degree rotation with no compromise over the front
- ★ Walk-across bridge and excellent operator vision field
- ★ Exclusive 26' to 44' off-set jib (straight or offset 15 and 30 degrees) allows operator to work further "up-and-over"
- ★ Two-speed hydraulic boom extension system

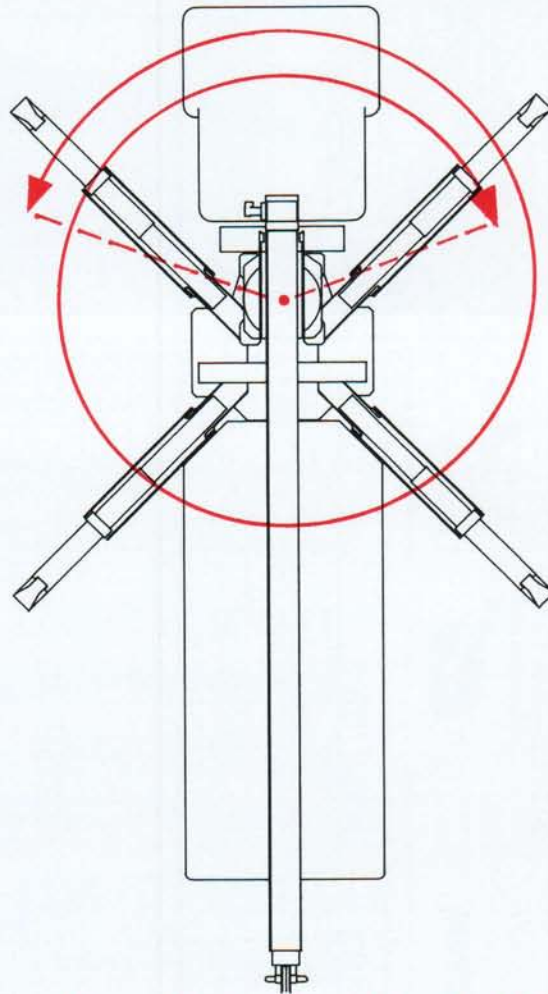
The Pioneer Details:

- ★ 55,000 lb. capacity
- ★ 4-section, 94 ft. proportional boom
- ★ 104' 10" maximum sheave height
- ★ With standard two-stage jib, 148' maximum sheave height

Additional Standard Equipment:

- ★ Dial-a-Swing rotation speed control for maximum fine-tuning
- ★ Radio ATB System
- ★ Capacity Alert System with indicator gauge at each control station
- ★ Dual air actuated foot throttles
- ★ Air Shift PTO
- ★ Winch cable tension roller
- ★ Rear underride bumper
- ★ 100 gallon hydraulic reservoir
- ★ 3-sheave boom tip
- ★ Pioneer installation of your crane

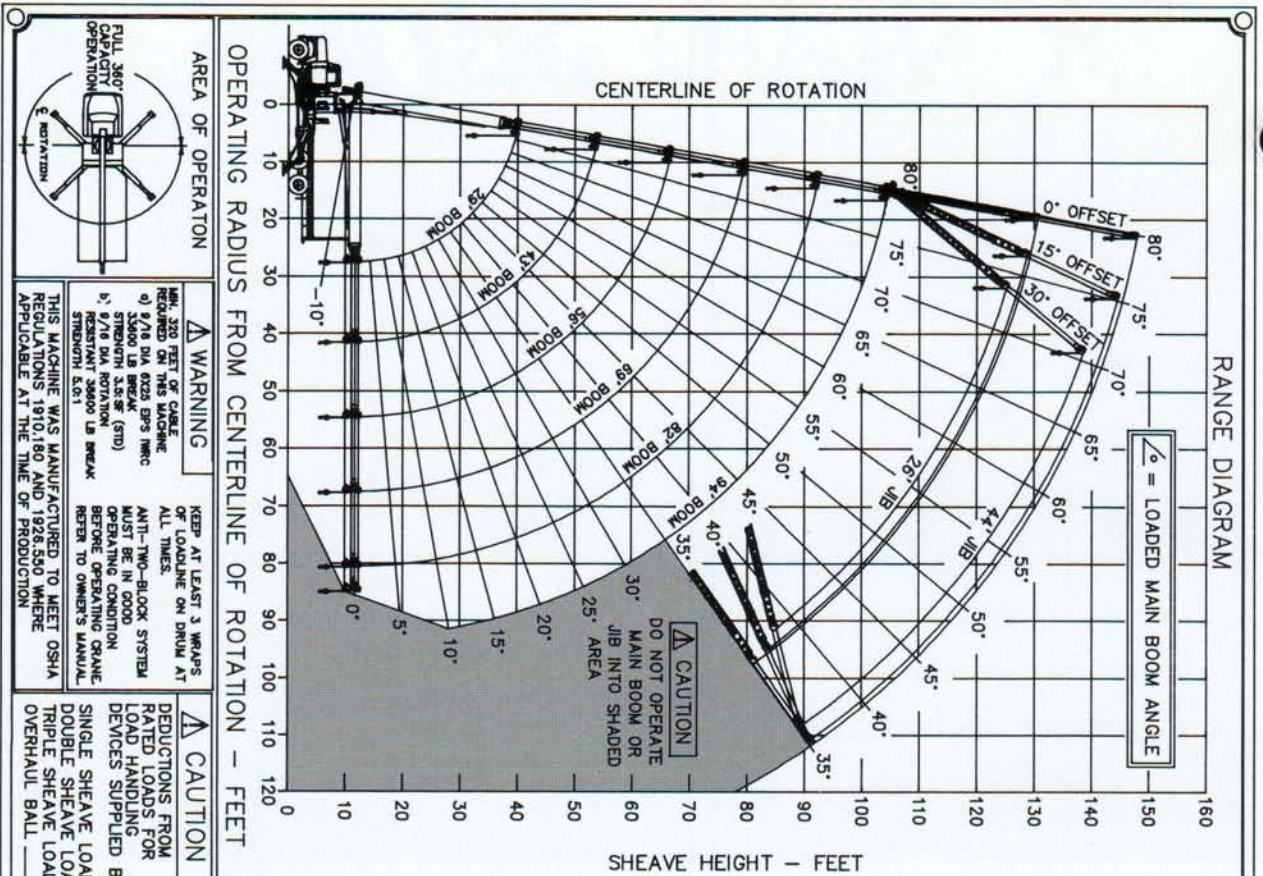
Pioneer Engineering's patented "X" outrigger design gives the crane operator something not previously available in the 50 year history of this industry ... full stability over the sides, back, and most important, over the front of the crane ... and the outriggers never leave the ground. Pioneer achieves this 360 degree "work zone" without a front bumper outrigger. With Pioneer, you need just one crane to get maximum work-ability!



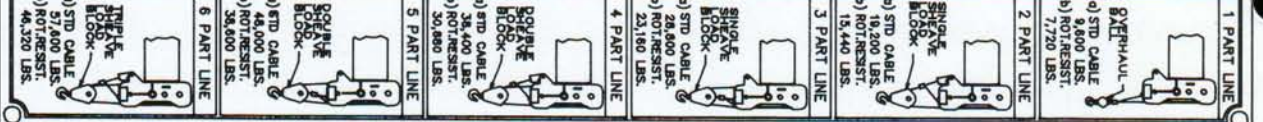
Pioneer Engineering utilizes the "X" outrigger design and goes one step further. Instead of just 375 degrees of rotation, Pioneer gives the operator a full 500 degree boom rotation. This truly allows working over the front of the unit with no compromise. Compared to other manufacturers, Pioneer gives you full stability and total access to the job site. It's a tough combination to beat.

PIONEER ENGINEERING

Pioneer 4000 Series

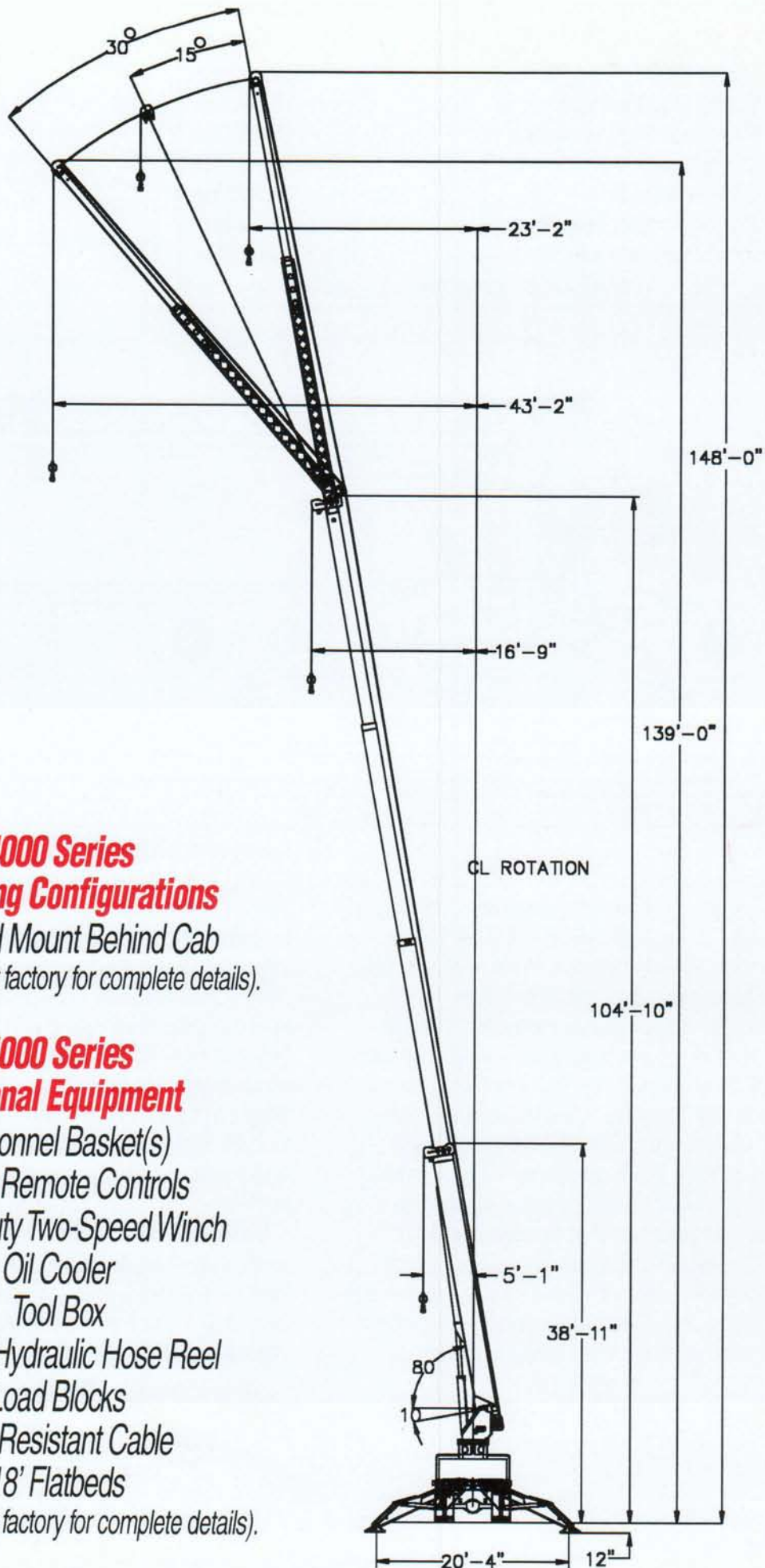


RAD FT.	BOOM LOAD RATING IN LBS. WITH OUTRIGGERS EXTENDED AND MACHINE LEVEL											
	29 FT BOOM	43 FT BOOM	56 FT BOOM	69 FT BOOM	82 FT BOOM	94 FT BOOM	26 FT 0° OFFSET	26 FT 15° OFFSET	26 FT 30° OFFSET	44 FT 0° OFFSET	44 FT 15° OFFSET	44 FT 30° OFFSET
5	80	100	120	140	160	180	190	200	210	220	230	240
8	73	90	105	120	135	150	160	170	180	190	200	210
10	69	85	95	105	115	125	135	145	155	165	175	185
12	65	80	88	95	105	115	125	135	145	155	165	175
14	60	75	80	85	90	95	100	105	110	115	120	125
16	55	68	70	72	74	76	78	80	82	84	86	88
20	44	50	52	54	56	58	60	62	64	66	68	70
25	24	28	30	32	34	36	38	40	42	44	46	48
30												
35												
40												
45												
50												
55												
60												
65												
70												
75												
80												
85												
90												



ANNEKEN ENGINEERING
301 DUCK ROAD, GRANDVIEW, MISSOURI 64030

LOAD RATING CHART 85-00016



**4000 Series
Mounting Configurations**
Standard Mount Behind Cab
(Please contact factory for complete details).

**4000 Series
Optional Equipment**
Personnel Basket(s)
Radio Remote Controls
Heavy-Duty Two-Speed Winch
Oil Cooler
Tool Box
Roofer's Hydraulic Hose Reel
Load Blocks
Spin Resistant Cable
18' Flatbeds
(Please contact factory for complete details).

Pioneer ★ 4000 Series

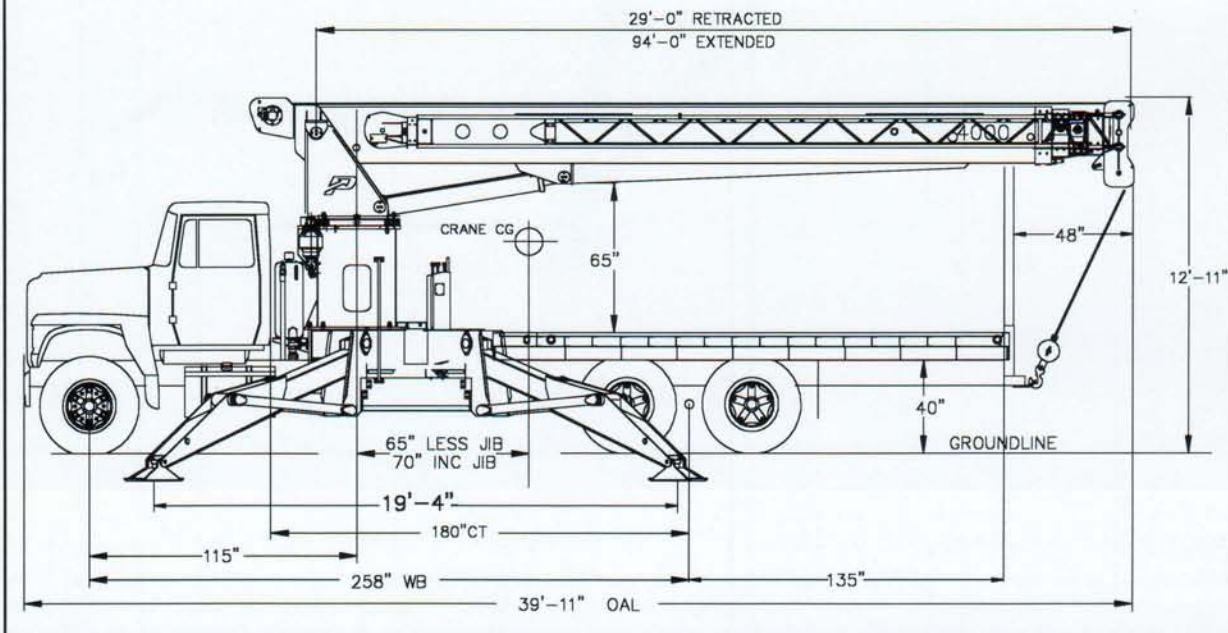
Pioneer ★ 4000 Series

Recommended Truck Chassis Requirements

Gross Vehicle Weight Rating	58,000 lbs.
Front Axle Weight Rating	18,000 lbs.
Rear Axle Weight Rating	40,000 lbs.
Wheelbase	258 inches
Cab-to-Trunnion	180 inches
Frame Section Modulus	30.0 inches ³
RBM Per Frame Rail	3,300,000 in./lbs.

Consult factory for special applications.

Do not operate crane, booms, jib extensions, any accessories, or loads within ten (10) feet (3 meters) of live power lines or other conductors of electricity.



Standard Equipment includes: "X" type outrigger design with warning horn for each outrigger • 500-degree rotation with hydraulic stop in each direction • Dial-a-Swing rotation speed control • Walk across bridge for access to either control station • Two-speed hydraulic boom extension system • Hydraulic pressure gauges • Capacity alert indicator gauge at each control station • Radio ATB system • 3-sheave boom tip • 26' / 44' jib with 15 and 30 degree offset capability • Back-up alarm • Zinc-plated, non-skid steps and operator's platform • Dual air actuated foot throttles • Air shift PTO • Winch cable tension roller • Rear underride bumper • Mainframe • Subframe • Turret and shearball bearing • Planetary rotation gearbox with integral brake •

Gearbox motor with integral counterbalance valves • 4-section, 94' proportional boom • 320' of 9/16" 6x25 IWRC EIPS wire rope • 3-section vane pump • Hydraulic shut-down capacity alert • Engine start/stop switch at each control station • 2-speed (112/224 fpm speeds), planetary winch (11,400 lb.) power beyond type • 100 gallon hydraulic reservoir including hydraulic fluid • 10-micron return filter with element replacement indicator • Suction line shut-off valve • Reservoir temperature/level gauge • Suction strainer with by-pass • Dual operator control stations • Boom rest (removable) • Overhaul ball with swivel hook • Fully painted • Complete with decals and warning placards • Manuals • Custom installation on truck chassis



Pioneer Engineering
301 Duck Road
Grandview, MO 64030-1664
Tele: 816-761-9494
Fax: 816-761-6999