

HAMMERHEAD TOWER CRANE



Specifications:

- ▶ Max jib length: 262 ft
- ▶ Capacity at max length: 5,525 lbs
- ▶ Max capacity: 44,200 lbs

WORKS FOR YOU.™

KEY

Zeichenerklärung · Légende · Leyenda · Legenda · Legenda · Условные обозначения



Hoisting · Heben · Levage · Elevación · Sollevamento · Elevação · Подъем



Trolleying · Katzfahren · Distribution · Distribución · Traslazione carrello · Distribuição · Передвижение каретки



Slewing · Schwenken · Orientation · Orientació · Rotazione · Giro · Поворот



Travelling · Schienenfahren · Translation · Traslación · Traslazione · Móvel · Передвижение



Directive on noise level · Richtlinie für den Schall-Leistungspegel · Directive sur le niveau acoustique · Directiva sobre el nivel acustico ·
Direttiva sul livello acustico · Diretiva sobre nível de ruídos · Директива по уровню шума



Consult us · Auf Anfrage · Nous consulter · Consultarnos · Consultateci · Consulte-nos · Проконсультироваться с нами



Power requirements · Geforderte Stromstärke · Puissance totale nécessaire · Potencia necesaria · Potenza totale richiesta ·
Requisitos de energia · Требования по питанию



Power supply · Stromversorgung · Alimentation · Alimentación · Alimentazione · Fonte de alimentação · Питание



In service · In Betrieb · En service · En servicio · In servizio · Em serviço · При работе



Out of service · Außer Betrieb · Hors service · Fuera de servicio · Fuori servizio · Fora de serviço · В режиме простоя



Max. under hook height · Höchste Hakenhöhe · Hauteur maxi. sous crochet · Maxima altura bajo gancho ·
Altezza max. sotto gancio · Alt. máx. sob o gancho · Макс высота крюка



Without load, without ballast, max. jib and max. height · Ohne Last und Ballast, mit Maximalausleger und Maximalhöhe ·
A vide, sans lest, avec flèche et hauteur maximum · Sin carga, sin lastre, con pluma y altura máxima · A vuoto, senza zavorra,
braccio max., altezza max. · Sem carga, sem lastro, lança máxima, altura máxima · Без груза, без балласта, на макс.
Длине вспомогательной стрелы и макс. Высоте



Counterweight · Gegengewicht · Lest de contre-flèche · Lastre de contra flecha · Zavorra controbraccio · Contrapeso ·
Противовес

C25

EN 14439-C25 out of service proof with LC1 & LC3 - wind coming from each side 100 Km/h - For different requirement please
contact us · EN 14439 - C25 außer Betrieb mit LC1 & LC3 - Wind von jeder Seite 100 km/h - für abweichende Anforderungen
kontaktieren Sie uns bitte · EN14439 - C25 hors service avec LC1 & LC3 - vent 100km/h de chaque côté - Nous contacter
pour des caractéristiques différentes · EN 14439 - C25 fuera de servicio con LC1 & LC3 - viento de cada lado 100 km/h -
contáctenos si necesita más información · EN 14439 - C25 fuori servizio con LC1 & LC 3 - vento in ogni direzione 100 km/h
- contattateci per differenti richieste · EN 14439 - C25 fora de serviço com LC1 e LC3 - vento de cada lado 100 kmh - para
pedidos especiais, entre em contato conosco · EN14439 - C25 не совместим с LC1 & LC3 - ветровая нагрузка не более
100км/ч - для уточнения спецификаций обращайтесь, пожалуйста, к нам



TEREX®

CONTENTS

SK 452-20

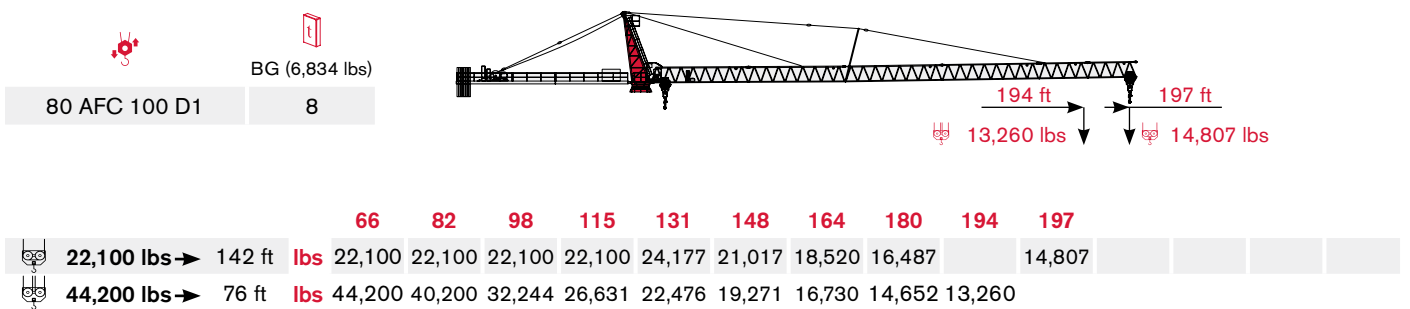
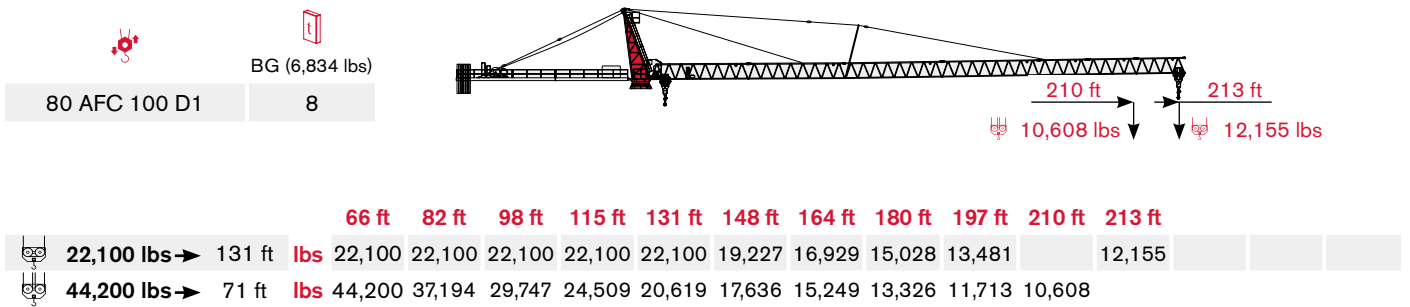
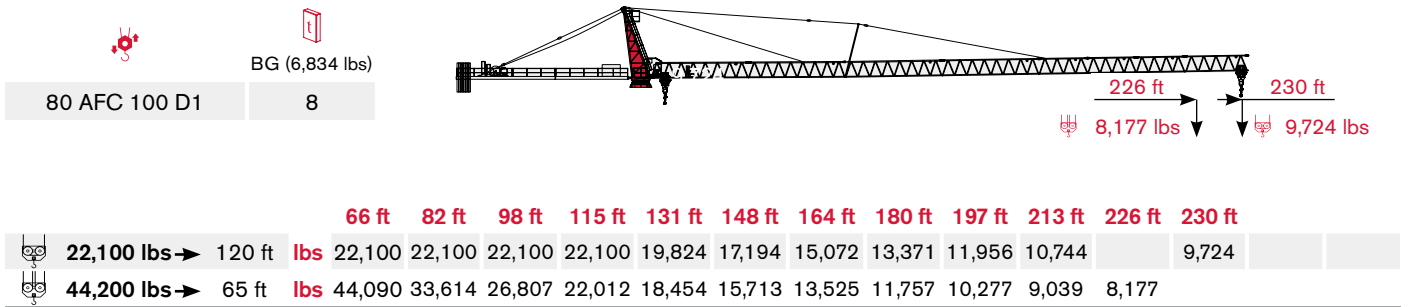
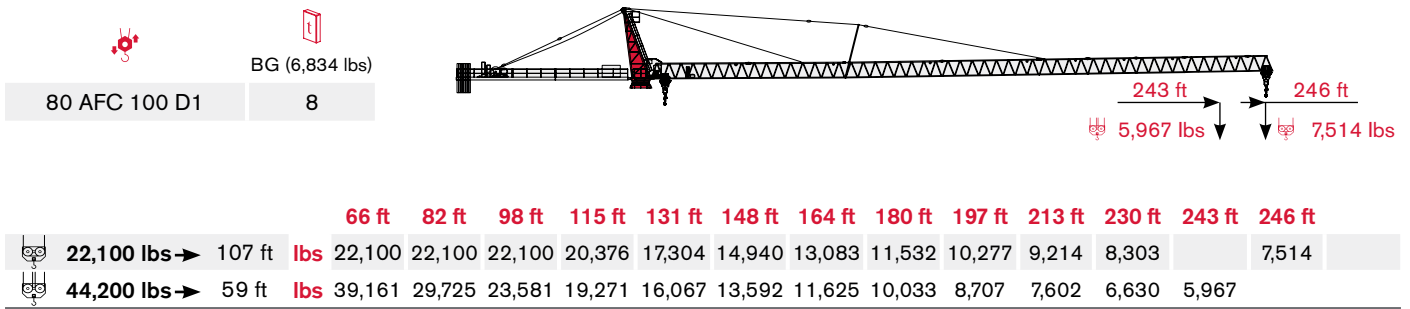
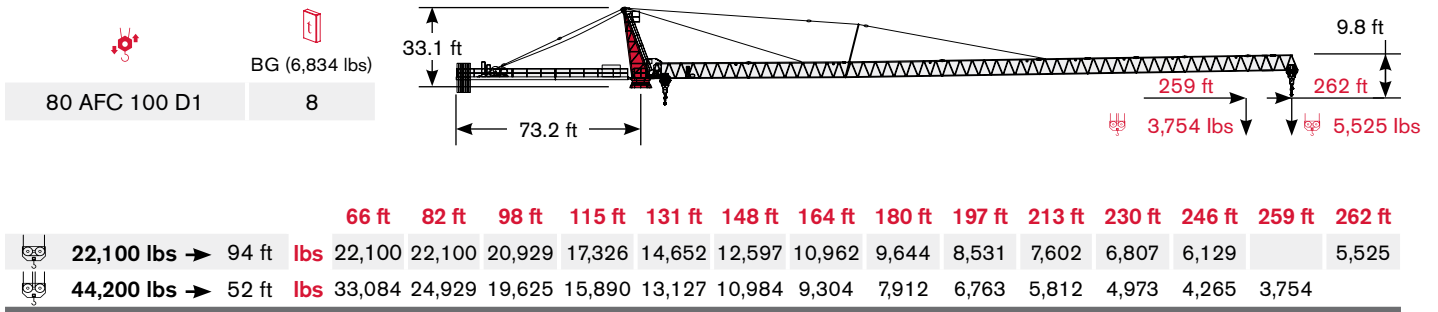
Inhalt · Contenu · Contenido · Indice · Sumário · Содержание

Page · Seite · Page · Página · Pagina · Página · Страница:

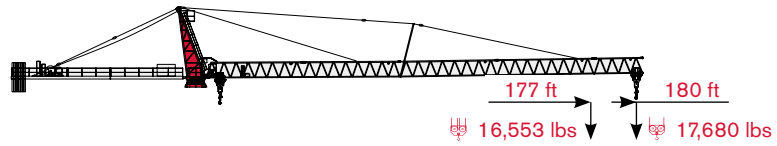
Load Diagram · Lastkurven · Courbes de charges · Curvas de cargas · Diagramma di portata · Diagrama de carga · Диаграмма грузоподъёмности	4
Tower · Turm · Tour · Torre · Torre · Torre · Башня.....	6
Mechanisms · Antriebe · Mécanismes · Mecanismos · Meccanismi · Mecanismo · Механизм	10
Transportation · Transport · Transport · Transporte · Trasporto · Transporte · Транспортировка.....	12

LOAD DIAGRAM

Lastkurven · Courbes de charges · Curvas de cargas · Diagramma di portata · Diagrama de carga · Диаграмма грузоподъёмности

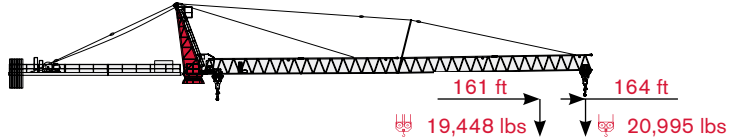


80 AFC 100 D1
BG (6,834 lbs)
7



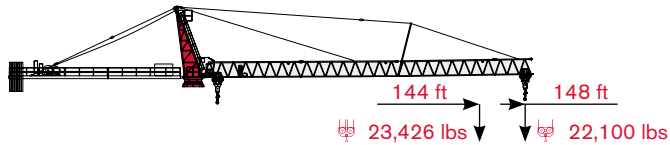
		66 ft	82 ft	98 ft	115 ft	131 ft	148 ft	164 ft	177 ft	180 ft									
22,100 lbs	→ 150 ft	lbs	22,100	22,100	22,100	22,100	22,100	22,100	19,846			17,680							
44,200 lbs	→ 81 ft	lbs	44,200	43,559	35,006	28,995	24,531	21,083	18,365	16,553									

80 AFC 100 D1
BG (6,834 lbs)
7



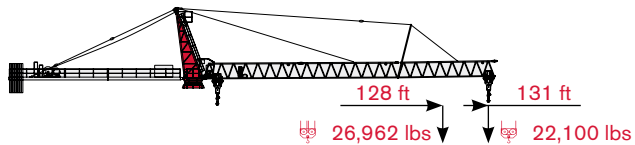
		66 ft	82 ft	98 ft	115 ft	131 ft	148 ft	161 ft	164 ft										
22,100 lbs	→ 157 ft	lbs	22,100	22,100	22,100	22,100	22,100	22,100		20,995									
44,200 lbs	→ 83 ft	lbs	44,200	44,200	35,979	29,835	25,260	21,746	19,448										

80 AFC 100 D1
BG (6,834 lbs)
7



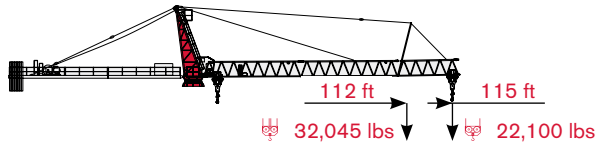
		66 ft	82 ft	98 ft	115 ft	131 ft	144 ft	148 ft											
22,100 lbs	→ 148 ft	lbs	22,100	22,100	22,100	22,100	22,100		22,100										
44,200 lbs	→ 86 ft	lbs	44,200	44,200	37,548	31,161	26,410	23,426											

80 AFC 100 D1
BG (6,834 lbs)
6



		66 ft	82 ft	98 ft	115 ft	128 ft	131 ft												
22,100 lbs	→ 131 ft	lbs	22,100	22,100	22,100	22,100		22,100											
44,200 lbs	→ 87 ft	lbs	44,200	44,200	38,277	31,780	26,962												

80 AFC 100 D1
BG (6,834 lbs)
6



		66 ft	82 ft	98 ft	112 ft	115 ft													
22,100 lbs	→ 115 ft	lbs	22,100	22,100	22,100		22,100												
44,200 lbs	→ 85 ft	lbs	44,200	44,200	37,283	32,045													

TOWER

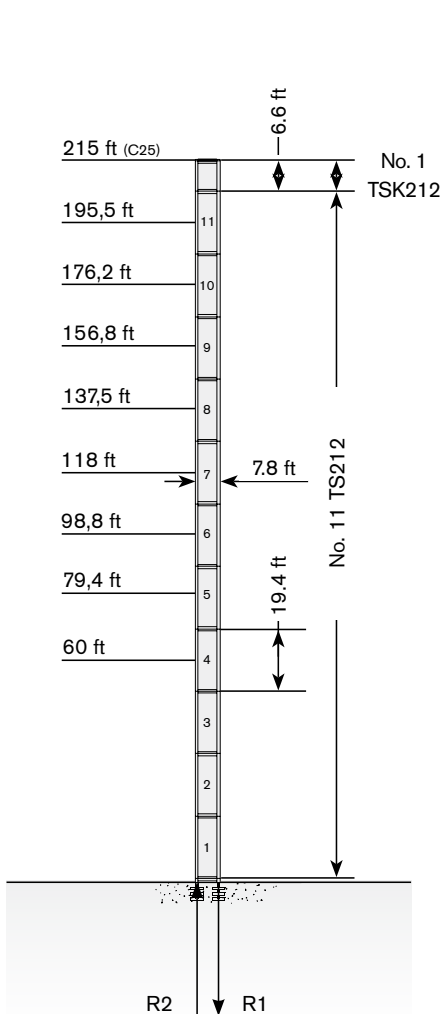
Turn · Tour · Torre · Torre · Torre · Башня

Standard Configurations · Standardkonfiguration · Standard Implantations ·
 Implantaciones Standard · Installazioni Standard · Configuração padrão ·
 Стандартная конфигурация крана


TS212

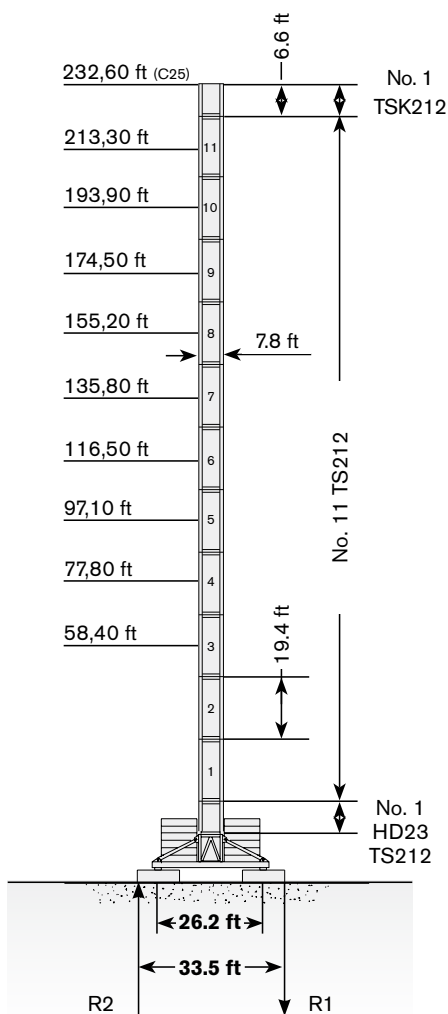
Basement: R

	●	◊	◊ C25
R1	-2626 kN	-2169 kN	-3064 kN
R2	1931 kN	1552 kN	2486 kN
	1202 kN		




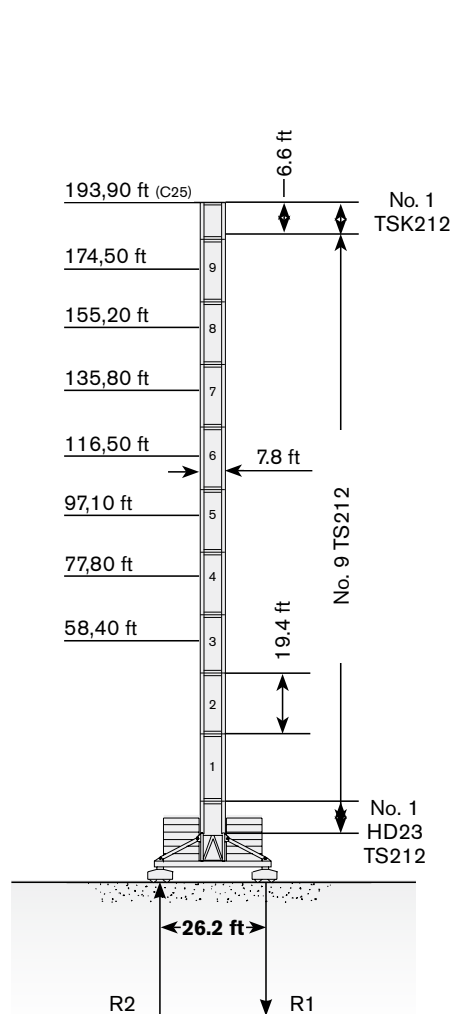
Basement: FP

	●	◊	◊ C25
R1	-1438 kN	-1208 kN	-1606 kN
R2	-54 kN	0 kN	0 kN
	1442 kN		



Basement: T


	●	◊	◊ C25
R1	-1316 kN	-856 kN	-1366 kN
R2	0 kN	-86 kN	0 kN
	1358 kN		




Max. under hook height · Höchstes Hakenhöhe · Hauteur maxi. sous crochet · Maxima altura bajo gancho · Altezza max. sotto gancio ·
 Alt. máx. sob o gancho · Макс высота крюка

HD23

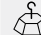
Basement: R1

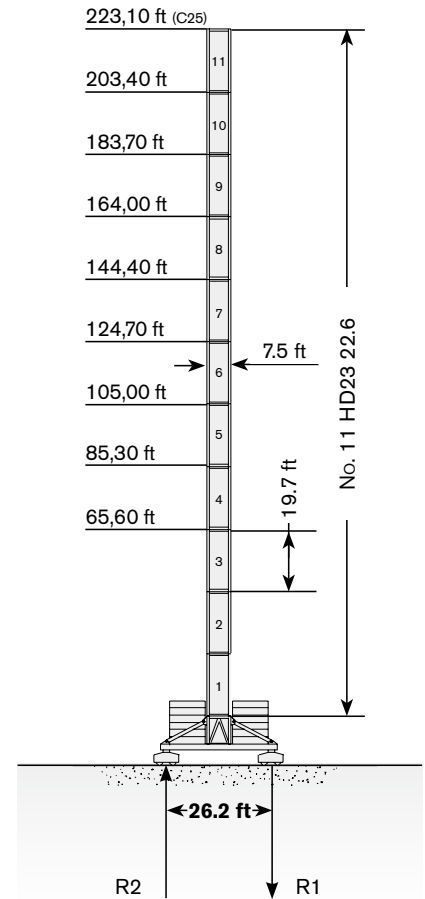
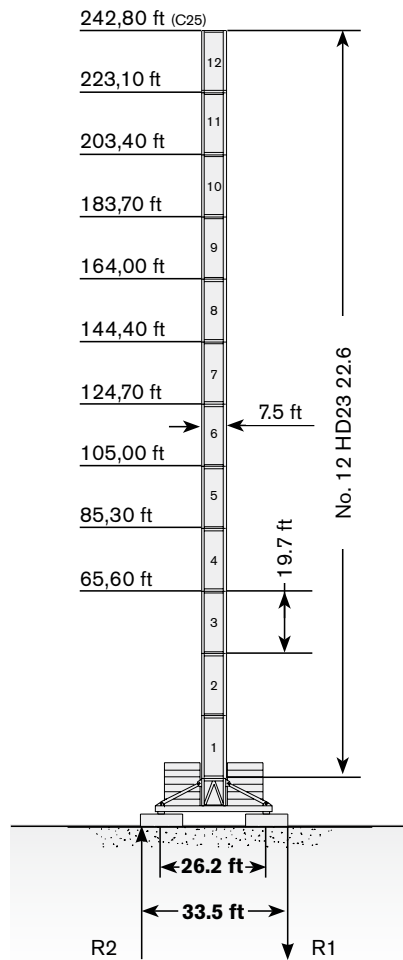
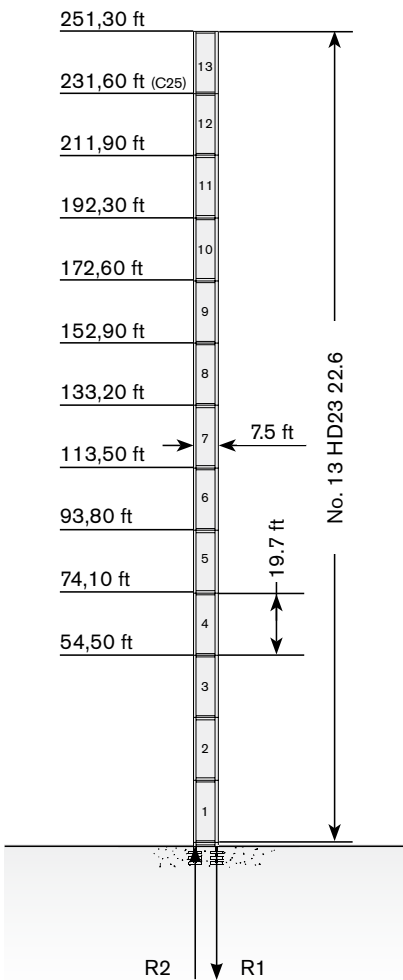
	●	◊	◊ C25
R1	-3183 kN	-3387 kN	-3317 kN
R2	2440 kN	2689 kN	2618 kN
	1367 kN		

Basement: FP

	●	◊	◊ C25
R1	-1528 kN	-1430 kN	-1788 kN
R2	-90 kN	0 kN	0 kN
	1543 kN		

Basement: T

	●	◊	◊ C25
R1	-1518 kN	-1169 kN	-1441 kN
R2	0 kN	0 kN	0 kN
	1493 kN		




Different heights and tower combinations are available; please consult us · Andere Höhen und Turmkombinationen auf Anfrage · Différentes hauteurs et combinaisons de tour sont disponibles; nous consulter · Hay diferentes alturas y combinaciones de torre disponibles. Consultémos · Altezze diverse e combinazioni di torre sono disponibili; consultateci · Diferentes alturas e combinações de torres disponíveis; fale conosco · Возможны другие сочетания высоты и конфигурации башни; проконсультируйтесь с нами

Standard Configurations · Standardkonfiguration · Standard Implantations · Implantaciones Standard · Installazioni Standard · Configuração padrão · Стандартная конфигурация крана

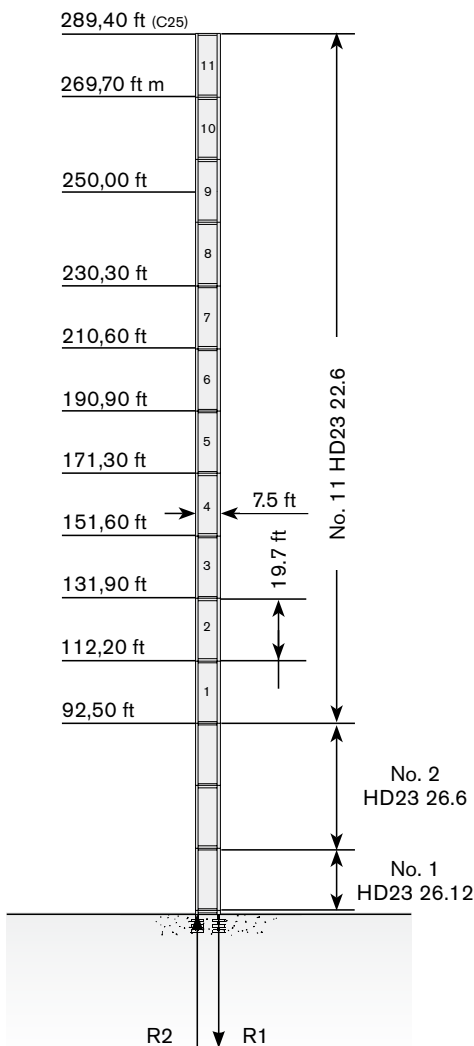
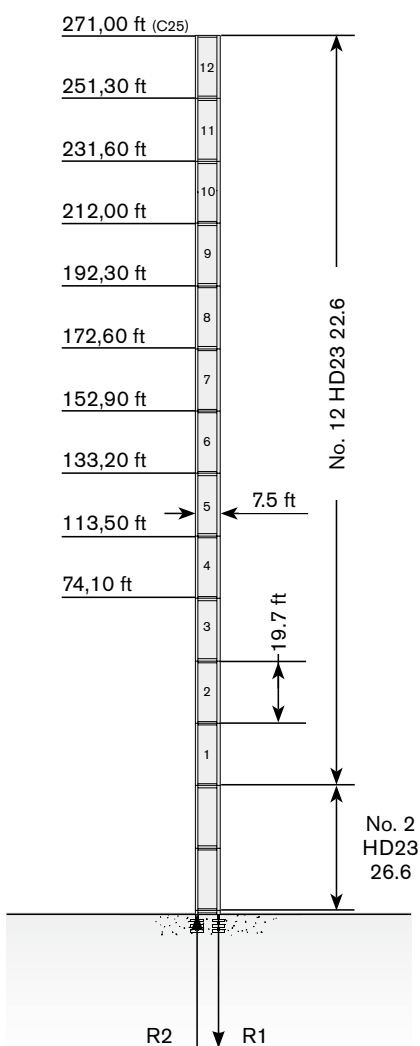
HD23

Basement: R2

	●	◊	◊ C25
R1	-3452 kN	-3942 kN	-4919 kN
R2	2627 kN	3204 kN	4181 kN
	1430 kN		

Basement: R3

	●	◊	◊ C25
R1	-3645 kN	-4529 kN	-5721 kN
R2	2767 kN	3741 kN	4932 kN
	1493 kN		

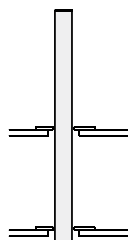


Max. under hook height · Höchstes Hakenhöhe · Hauteur maxi. sous crochet · Maxima altura bajo gancho · Altezza max. sotto gancio ·
Alt. máx. sob o gancho · макс высота крюка

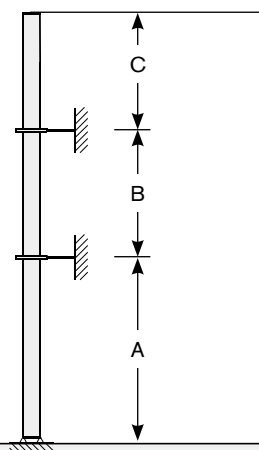
Different heights and tower combinations are available; please consult us · Andere Höhen und Turmkombinationen auf Anfrage · Différentes hauteurs et combinaisons de tour sont disponibles; nous consulter · Hay diferentes alturas y combinaciones de torre disponibles. Consultémos · Altezze diverse e combinazioni di torre sono disponibili; consultateci · Diferentes alturas e combinações de torres disponíveis; fale conosco · Возможны другие сочетания высоты и конфигурации башни; проконсультируйтесь с нами

Other configurations · Aufstellmöglichkeiten · Autres Implantations · Otras Implantaciones · Altre Installazioni · Outras configurações · Другие конфигурации

Bottom climbing crane · Kletterkran im Gebäude · Télescopage sur dalles · Telescopage grúa trepadora · Gru climbing · Guindaste automontante interno · Самоподъемный кран



Crane tied to the structure · Geankerter Kran · Grue ancrée · Grúa anclada · Gru ancorata · Guindaste ancorado na estrutura · Кран, крепящийся к сооружению



Tower: TS212

	min	max
A	68,2 ft	168,3 ft
B	48,6 ft	117,8 ft
C	165,4 ft	



Different heights and tower combinations are available; please consult us · Andere Höhen und Turmkombinationen auf Anfrage · Différentes hauteurs et combinaisons de tour sont disponibles; nous consulter · Hay diferentes alturas y combinaciones de torre disponibles. Consultémos · Altezze diverse e combinazioni di torre sono disponibili; consultateci · Diferentes alturas e combinações de torres disponíveis; fale conosco · Возможны другие сочетания высоты и конфигурации башни; проконсультируйтесь с нами




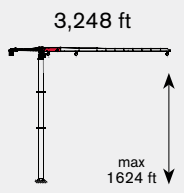

MECHANISMS

Antriebe · Mécanismes · Mecanismos · Meccanismi · Mecanismo · Механизм

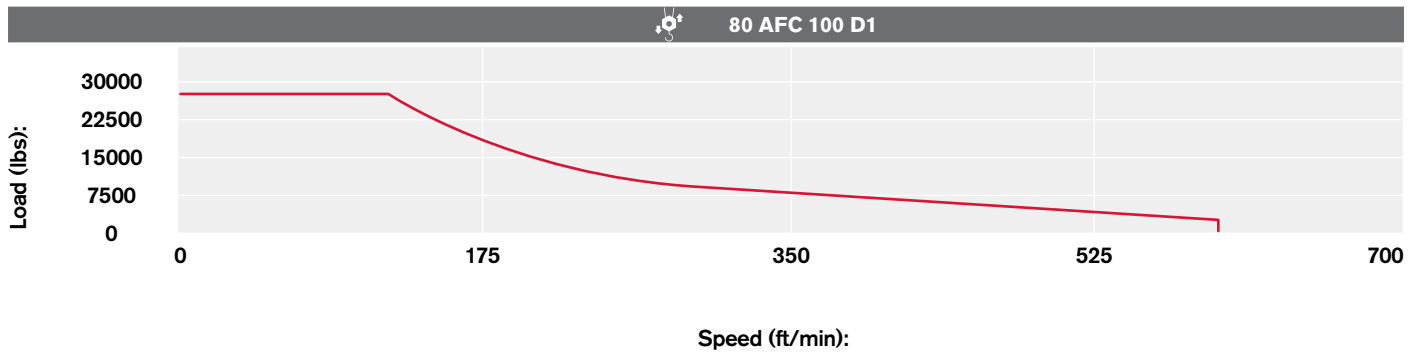
Power supply · Stromversorgung · Alimentation · Suministro eléctrico · Alimentazione · Requisitos de energia · Требования по питанию

			
	80 AFC 100 D1	140 kVA	480V - 60Hz / 400V - 50Hz - 3 ph



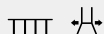

Hoisting · Heben · Levage · Elevación · Sollevamento · Elevação · Подъем


			lbs	ft/min	kW	
	80 AFC 100 D1		22,050	0 → 125	80	
			18,743	0 → 148		
			12,128	0 → 210		
			7,718	0 → 295		
			1,544	0 → 623		
			44,100	0 → 62		
			37,485	0 → 72		
			24,255	0 → 105		
			15,435	0 → 148		
			3,087	0 → 312		

Hoisting Speed · Heben Geschwindigkeit · Vitesse de Levage · Velocidad de Elevación · Velocità di Sollevamento · Velocidade de içamento · Скорость подъема



Additional Specifications · Weitere Leistungsdaten · Spécifications additionnelles · Otras prestaciones · Altre movimentazioni · Especificações adicionais · Дополнительные спецификации

	DVF 5 15 D2	0 → 312 ft/min	1 x 15kW
	SVF 3 3 8	0 → 0,9 rpm	3 x 7,5kW
			





 Please consult us

TRANSPORTATION

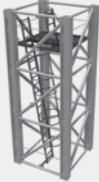
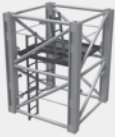
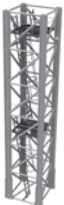
Transport · Transport · Transporte · Trasporto · Transporte · Транспортировка

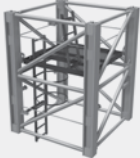


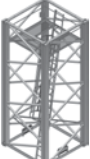
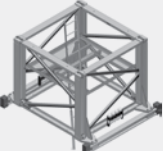

Packing list

Undercarriage

SK 452-20	DESCRIPTION · BESCHREIBUNG · DESCRIPTION · DESCRIPCIÓN · DESCRIZIONE · DESCRIÇÃO · ОПИСАНИЕ	LENGTH · LÄNGE · LONGUEUR · LONGITUD · LUNGHEZZA · COMPRIMENTO · ДЛИНА	WIDTH · BREITE · LARGEUR · ANCHURA · LARGHEZZA · LARGURA · ШИРИНА	HEIGHT · HÖHE · HAUTEUR · ALTURA · ALTEZZA · ALTURA · ВЫСОТА	WEIGHT · GEWICHT · POIDS · PESO · PESO · PESO · ВЕС
	TRESTLE CONNECTING THE UNDERCARRIAGE STRUTS 26X26 ft UNDERCARRIAGE	9.5 ft	9.5 ft	9.5 ft	20176 lbs
	UNDERCARRIAGE STRUT 26X26 ft UNDERCARRIAGE	14.1 ft	1.0 ft	7.4 ft	4013 lbs
	INNER SLEEPER 26X26 ft UNDERCARRIAGE	13.1 ft	0.5 ft	1.1 ft	463 lbs
	OUTER SLEEPER 26X26 ft UNDERCARRIAGE	19.6 ft	1.0 ft	1.1 ft	1380 lbs

Tower


	TOWER MAST SECTION HD23 26.6	19.7 ft	7.7 ft	7.6 ft	14222 lbs* 13892 lbs**
	TOWER MAST SECTION HD23 22.6	19.7 ft	7.5 ft	7.5 ft	10430 lbs* 10308 lbs**
	TOWER MAST SECTION HD23 22.3	9.8 ft	7.5 ft	7.5 ft	5998 lbs* 5865 lbs**
	TOWER MAST SECTION HD23 26.12 (6 SCREWS)	39.4 ft	7.6 ft	8.4 ft	34552 lbs*

SK 452-20	DESCRIPTION · BESCHREIBUNG · DESCRIPTION · DESCRIPCIÓN · DESCRIZIONE · DESCRIÇÃO · ОПИСАНИЕ	LENGTH · LÄNGE · LONGUEUR · LONGITUD · LUNGHEZZA · COMPRIMENTO · ДЛИНА	WIDTH · BREITE · LARGEUR · ANCHURA · LARGHEZZA · LARGURA · ШИРИНА	HEIGHT · HÖHE · HAUTEUR · ALTURA · ALTEZZA · ALTURA · ВЫСОТА	WEIGHT · GEWICHT · POIDS · PESO · PESO · ВЕС
	TOWER MAST SECTION HD23 26.3	9.8 ft	7.7 ft	7.6 ft	8066 lbs*
	TOWER MAST SECTION HD23 26.6 (6 SCREWS)	19.7 ft	8.4 ft	7.6 ft	18853 lbs
	MAST SECTION ADAPTER HD23 - TS212	9.8 ft	7.8 ft	6.6 ft	7,133 lbs
	TOWER MAST SECTION TS212	19.5 ft	7.8 ft	8.0 ft	9,305 lbs
	TOWER MAST SECTION TSK212	7.8 ft	9.8 ft	6.6 ft	6,174 lbs
	SLEWING UNIT	9.2 ft	7.2 ft	8.5 ft	24,255 lbs


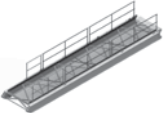





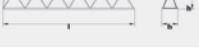
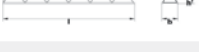
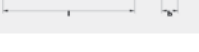
* Complete with ladders, platforms and assembly equipment
 ** With aluminium ladders

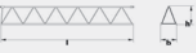







Packing list

Cab

SK 452-20	DESCRIPTION · BESCHREIBUNG · DESCRIPTION · DESCRIPCIÓN · DESCRIZIONE · DESCRIÇÃO · ОПИСАНИЕ	LENGTH · LÄNGE · LONGUEUR · LONGITUD · LUNGHEZZA · COMPRIMENTO · ДЛИНА	WIDTH · BREITE · LARGEUR · ANCHURA · LARGHEZZA · LARGURA · ШИРИНА	HEIGHT · HÖHE · HAUTEUR · ALTURA · ALTEZZA · ALTURA · ВЫСОТА	WEIGHT · GEWICHT · POIDS · PESO · PESO · PESO · ВЕС
	CAB SUPPORT PLATFORM UNIT	16.5 ft	7.2 ft	8.2 ft	4,631 lbs

Upper Part

	TOWER HEAD UNIT	7.2 ft	6.6 ft	29.5 ft	8,820 lbs
	COUNTERJIB-01 UNIT	31.1 ft	6.7 ft	2.0 ft	5,072 lbs
	COUNTERJIB-02 UNIT	38.1 ft	6.7 ft	2.6 ft	8,247 lbs
	HOIST WINCH UNIT	12.4 ft	7.4 ft	6.7 ft	16,615 lbs***
	JIB SECTION-01	38.91 ft	6.46 ft	7.22 ft	6,836 lbs
	JIB SECTION-02	40.49 ft	6.46 ft	7.22 ft	6,527 lbs
	JIB SECTION-03	38.85 ft	6.46 ft	7.58 ft	4,476 lbs
	JIB SECTION-04	18.67 ft	6.46 ft	6.27 ft	1,830 lbs
	JIB SECTION-05	35.01 ft	6.46 ft	6.89 ft	4,410 lbs
	JIB SECTION-06	35.43 ft	6.46 ft	6.33 ft	2,955 lbs
	JIB SECTION-07	33.50 ft	6.46 ft	6.27 ft	1,985 lbs

SK 452-20	DESCRIPTION · BESCHREIBUNG · DESCRIPTION · DESCRIPCIÓN · DESCRIZIONE · DESCRIÇÃO · ОПИСАНИЕ	LENGTH · LÄNGE · LONGUEUR · LONGITUD · LUNGHEZZA · COMPRIMENTO · ДЛИНА	WIDTH · BREITE · LARGEUR · ANCHURA · LARGHEZZA · LARGURA · ШИРИНА	HEIGHT · HÖHE · HAUTEUR · ALTURA · ALTEZZA · ALTURA · ВЫСОТА	WEIGHT · GEWICHT · PESO · PESO · PESO · ВЕС
	JIB SECTION-08	17.06 ft	6.46 ft	6.17 ft	882 lbs
	JIB SECTION-09	18.87 ft	6.46 ft	6.33 ft	1,874 lbs
	JIB TIP	4.6 ft	6.7 ft	2.11 ft	662 lbs
	INNER TROLLEY	5.7 ft	7.4 ft	4.5 ft	882 lbs
	OUTER TROLLEY	5.7 ft	10.5 ft	5.60 ft	1,103 lbs
	INNER HOIST BLOCK	2.20 ft	0.8 ft	4.30 ft	662 lbs
	OUTER HOIST BLOCK	1.12 ft	0.80 ft	6.30 ft	1,169 lbs
	TIR-RODS SUPPORTS	21.7 ft	5.80 ft	4.80 ft	573 lbs

*** Hoisting rope not included

Effective Date: June 2016.

Product specifications and prices are subject to change without notice or obligation. The photographs and/or drawings in this document are for illustrative purposes only. Refer to the appropriate Operator's Manual for instructions on the proper use of this equipment. Failure to follow the appropriate Operator's Manual when using our equipment or to otherwise act irresponsibly may result in serious injury or death. The only warranty applicable to our equipment is the standard written warranty applicable to the particular product and sale and Terex makes no other warranty, express or implied. Products and services listed may be trademarks, service marks or trade-names of Terex Corporation and/or its subsidiaries in the USA and other countries. All rights are reserved. Terex® is a registered trademark of Terex Corporation in the USA and many other countries.

Gültig ab: Juni 2016.

Produktbeschreibungen und Preise können jederzeit und ohne Verpflichtung zur Ankündigung geändert werden. Die in diesem Dokument enthaltenen Fotos und/oder Zeichnungen dienen rein anschaulichen Zwecken. Anweisungen zur ordnungsgemäßen Verwendung dieser Ausrüstung entnehmen Sie bitte dem zugehörigen Betriebshandbuch. Nichtbefolgung des Betriebshandbuchs bei der Verwendung unserer Produkte oder anderweitig fahrlässiges Verhalten kann zu schwerwiegenden Verletzungen oder Tod führen. Für dieses Produkt wird ausschließlich die entsprechende, schriftlich niedergelegte Standardgarantie gewährt. Terex leistet keinerlei darüber hinaus gehende Garantie, weder ausdrücklich noch stillschweigend. Die Bezeichnungen der aufgeführten Produkte und Leistungen sind gegebenenfalls Marken, Servicemarken oder Handelsnamen der Terex Corporation und/oder ihrer Tochtergesellschaften in den USA und anderen Ländern. Alle Rechte vorbehalten. „TEREX“ ist eine eingetragene Marke der Terex Corporation in den USA und vielen anderen Ländern.

Date d'effet : Juin 2016.

Les spécifications et prix des produits sont sujets à modification sans avis ou obligation. Les photographies et/ou dessins contenus dans ce documents sont uniquement pour illustration. Veuillez vous référer à la notice d'utilisation appropriée pour les instructions quant à l'utilisation correcte de cet équipement. Tout manquement au suivi de la notice d'utilisation appropriée lors de l'utilisation de notre équipement ou tout acte autrement irresponsable peut résulter en blessure corporelle sérieuse ou mortelle. La seule garantie applicable à notre équipement est la garantie standard écrite applicable à un produit et à une vente spécifique. Terex n'offre aucune autre garantie, expresse ou implicite. Les produits et services proposés peuvent être des marques de fabrique, des marques de service ou des appellations commerciales de Terex Corporation et/ou ses filiales aux Etats Unis et dans les autres pays, et tous les droits sont réservés. «TEREX» est une marque déposée de Terex Corporation aux Etats Unis et dans de nombreux autres pays.

Fecha efectiva: Junio 2016.

Los precios y las especificaciones de productos pueden sufrir cambios sin aviso previo u obligación. Las fotografías o dibujos de este documento tienen un fin meramente ilustrativo. Consulte el manual de instrucciones del operador correspondiente para más información sobre el uso correcto de este equipo. El hecho de no respetar el manual del operador correspondiente al utilizar el equipo o actuar de forma irresponsable puede suponer lesiones graves o fatales. La única garantía aplicable a nuestro equipo es la garantía escrita estándar correspondiente a cada producto y venta, y TEREX no amplía dicha garantía de forma expresa o implícita. Los productos y servicios mencionados pueden ser marcas registradas, marcas de servicio o nombres de marca de TEREX Corporation o de sus filiales en Estados Unidos de América y otros países, y se reservan todos los derechos. „TEREX“ es una marca comercial registrada de Terex Corporation en Estados Unidos de América y muchos otros países.

Data di inizio validità: Giugno 2016.

Ci riserviamo il diritto di modificare le specifiche e i prezzi dei prodotti in ogni momento e senza preavviso. Le fotografie e/o i disegni contenuti in questo documento sono destinati unicamente a scopi illustrativi. Consultare le istruzioni sull'uso corretto di questo macchinario, contenute nell'opportuno Manuale dell'operatore. L'inottemperanza delle istruzioni contenute nel Manuale dell'operatore del macchinario e altri comportamenti irresponsabili possono provocare gravi lesioni, anche mortali. L'unica garanzia applicabile ai nostri macchinari è la garanzia scritta standard applicabile al particolare prodotto e alla particolare vendita; Terex è esonerata dal fornire qualsiasi altra garanzia, esplicita o implicita. I prodotti e servizi elencati possono essere dei marchi di fabbrica, marchi di servizio o nomi commerciali di TEREX Corporation e/o società affiliate negli Stati Uniti d'America e altre nazioni e tutti i diritti sono riservati. „TEREX“ è un marchio registrato di Terex Corporation negli USA e molti altri Paesi.

Data de vigência: Junho 2016.

Especificações e preços dos produtos sujeitos a alteração sem aviso prévio ou obrigações. As fotografias e/ou desenhos deste documento servem apenas para fins ilustrativos. Consulte o respectivo Manual de Instruções para instruções sobre o uso correto deste equipamento. A falta de atenção ao respectivo Manual do Operador no uso de nosso equipamento ou a operação da máquina em condições impróprias pode resultar em lesão grave ou morte. A única garantia aplicável aos nossos equipamentos é a garantia padrão por escrito, aplicável ao produto específico e à sua venda, sem que nenhuma outra, expressa ou implícita, seja oferecida pela Terex. Os produtos e serviços listados podem ser marcas comerciais, marcas de serviço ou nomes-fantasia da Terex Corporation e/ou suas subsidiárias nos EUA e em outros países. Todos os direitos reservados. Terex® é marca registrada da Terex Corporation nos EUA e muitos outros países.

Вступает в силу: Июнь 2016.

Технические характеристики и цены могут изменяться без предварительного уведомления и без каких-либо обязательств для производителя. Фотографии и (или) чертежи, использованные в документе, приведены исключительно в качестве иллюстраций. Инструкции по правилам эксплуатации даются в соответствующих руководствах для операторов данного оборудования. Невыполнение рекомендаций руководства по эксплуатации нашего оборудования или другие безответственные действия могут повлечь серьезные травмы или смерть. Единственной гарантией, действующей в отношении нашего оборудования, является стандартная форма письменной гарантии на данный тип оборудования и на условия его продажи.



Copyright 2016 Terex Corporation

Terex Cranes, Global Marketing, Dinglerstraße 24, 66482 Zweibrücken, Germany
Tel. +49 (0) 6332 830, Email: info.cranes@terex.com, www.terexcranes.com

Brochure Reference: TC-DS-I-E/F/G/I/S/P/R-SK452-20-06/16

www.terexcranes.com



WORKS FOR YOU.™